

## Expansions and Options:

### 1. Expansions: \_\_\_\_\_ Sq. Ft.\*

- a. Sunrooms \_\_\_\_\_ 139
- b. Screened Porch \_\_\_\_\_ 139
- c. Walkout Daylight (unfinished) \_\_\_\_\_ 1,210
- d. Walkout-Partial (unfinished) \_\_\_\_\_ TBD
- e. Full Basement (unfinished) \_\_\_\_\_ 1,210
- f. 2nd floor Two bedrooms, full bath, Sm den or office nook \_\_\_\_\_ TBD
- g. 2nd floor One bedroom, full bath, Studio, lg walk-ins \_\_\_\_\_ TBD
- h. 2nd floor storage \_\_\_\_\_ TBD
- i. Master suite bump out \_\_\_\_\_ 60
- j. Den \_\_\_\_\_ 120

### 2. Custom Home Expansions

- Interior designs  
By owner on fee basis \_\_\_\_\_ TBD
- Window Seats
- Skylights

### 3. Deck/Patio Options - site specific

- a. Concrete \_\_\_\_\_ Std
- b. Brick \_\_\_\_\_ 139
- c. Pressure Treated \_\_\_\_\_ 139
- d. Cedar \_\_\_\_\_ 139

### 4. Kitchen/Bathrooms

- a. Custom counter tops
- b. Custom cabinets

### 5. Fireplace

- a. Gas with glass doors (hearth optional)

### 6. Trim

- a. Chair rail
- b. Molding package upgrade

### 7. Casework and Built-ins

- Custom designed  
By owner on fee basis \_\_\_\_\_ TBD

### 8. Ceilings

- a. Living room with crown molding
- b. Bedroom with crown molding
- c. Tray

### 9. Flooring

- Tile available in  
Kitchen/Bathrooms

### 10. Residential elevator

#### Electrical up-grades:

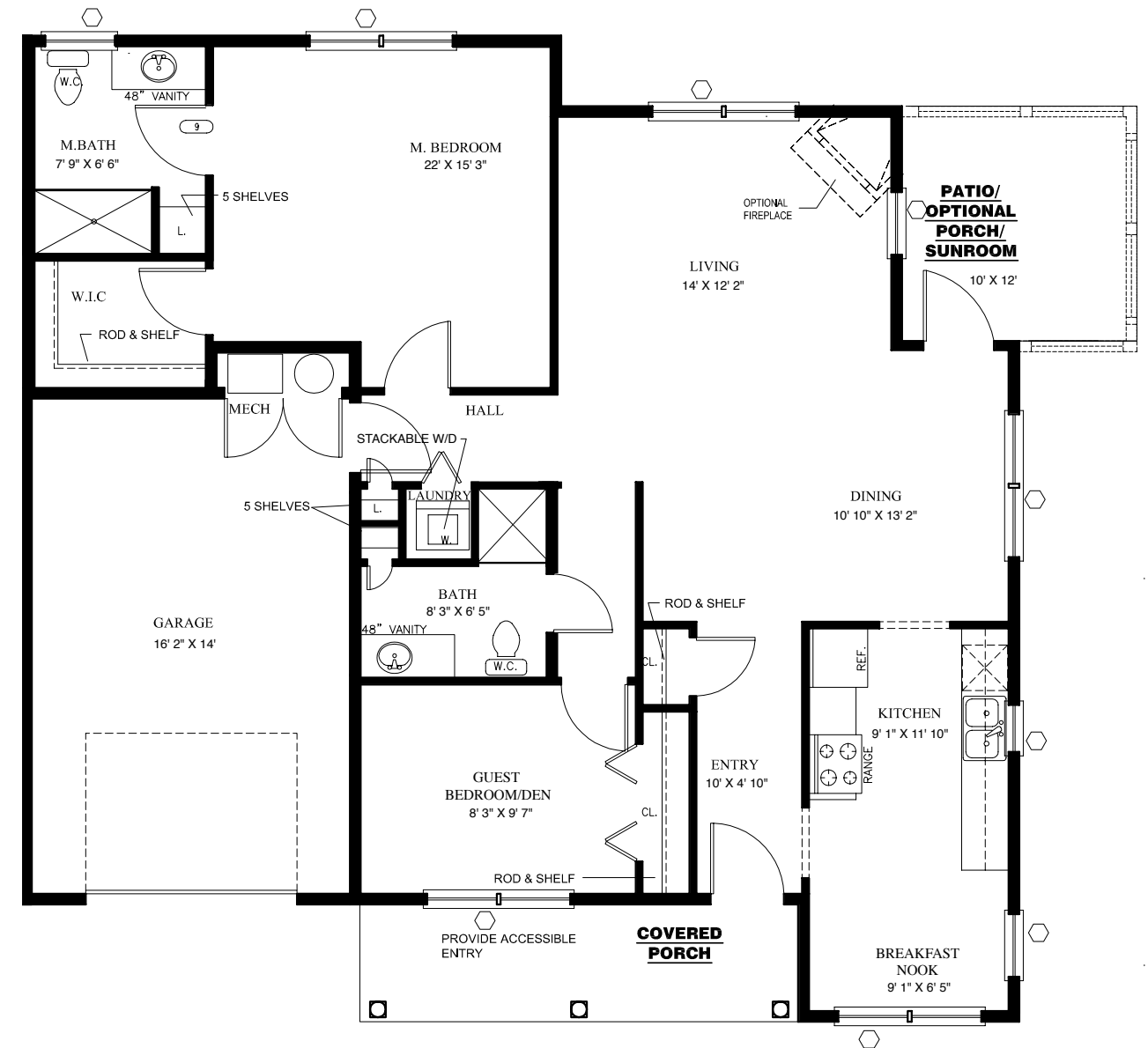
- 200 amperes service (100 std.)
- Additional cable TV outlet
- Additional floor receptacle
- Additional GFIC outlets
- Additional keyless fixture in garage
- Additional outlet
- Additional phone jack and wiring
- Additional single pole switch
- Additional smoke detector
- Closet light
- Dedicated circuit for air conditioner
- Dedicated circuit for compactor
- Dedicated circuit for freezer

- Dedicated circuit for microwave
- Exterior flood light fixture
- Generator
- Motion sensor for floodlights
- Nutone heat/vent/light unit
- Recessed down light
- Recessed eyeball down light
- Single pole dimmer
- Surge protector for entire home
- Three-way dimmer
- Wiring for paddle fan
- Wiring for three-way switch
- Wiring for wall sconce

#### HVAC up-grades

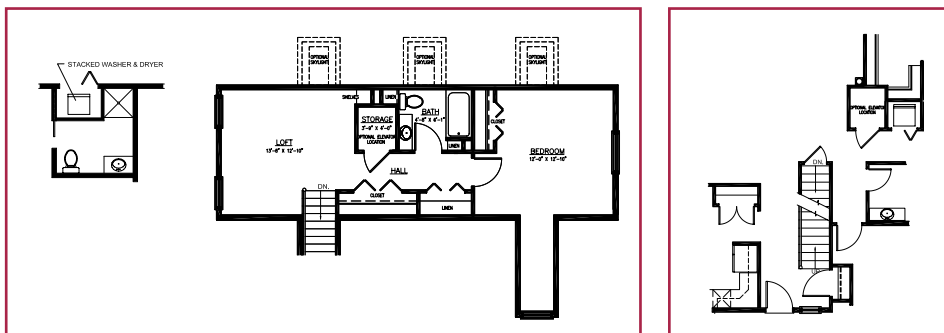
- 2nd lavatory in bathroom
- Additional heat zone for 2nd bedroom
- Additional heat zone for sunroom
- Basement full bath
- Basement half bath
- Central air
- Central vacuum
- Gas line to other appliance
- Grab bars
- Heat in basement
- Heat in garage
- Ice maker connection
- Service sink
- Set back thermostats
- Sewer lift pump for basement bath
- Soaking tub
- Sprinkler system
- Whirlpool tub

# Rockport Cottage - Single



PROVIDE ACCESSIBLE GRADE TO PORCH

### Optional 2nd floor - 504 sq. ft.\*!



\*All square footage estimates based on architectural drawings.



**Atlantic Heights**  
THE COTTAGE HOMES

One Harbor Drive  
Saco, Maine 04072

800-874-6990 207-283-3022  
www.AtlanticHeightsMaine.com



**Atlantic Heights**  
THE COTTAGE HOMES

**1,210 square feet\* of living area!**

\*All square footage estimates based on architectural drawings and do not include porches or garage.

# Rockport Cottage - Duplex



1,210 square feet\* of living area!

Select Cottages Available with Daylight or Walkout Basements!

Optional Amenities list:

- Finished or unfinished 2nd floor, (504 square feet.\*)
- Daylight or Walk-out basement
- Gas fireplace.
- Open or enclosed seasonal porch
- Kitchen cabinet finish selection.
- Kitchen & bathroom fixture selection.
- Choose from carpet, tile or hardwood flooring.



\*All square footage estimates based on architectural drawings.